

Sing in our Choir for an evening, a day, or forever!

Messiah for All

**Tuesday 10 December
2013 at 7.30 pm**

Bollington Arts Centre
Wellington Road SK10 5JR

Join us and our orchestra in raising the roof once more in Handel's uplifting and joyful music. All proceeds this year will benefit **Bollington Community Heritage Trust** and its valuable work to keep the Methodist Church building open.

Early booking is essential as this event is always a sell-out!

Tickets £6: 01625 261933

Also in support of **BCHT**, the Choir will be performing in a fundraising concert, previewing our December concert and singing favourite numbers by Gilbert and Sullivan with guest soloist **Sue Sawyer**. Look out for posters in the autumn.

**Sunday 3 November
2013 at 7.30 pm**

Bollington Methodist Church
Wellington Road SK10 5JR

***JOIN US TO SING
Carmina Burana***

If you'd like to join us for the whole of our unique and exciting season from September, you're assured of a warm welcome and no auditions! But we're also inviting additional singers to swell our ranks for what promises to be a very special concert when we perform Carl Orff's popular and stirring work in the 550 seat Festival Marquee.

Whether you know it well or have never sung it before, join us at our Tuesday evening rehearsals from March 2014 - and at a rehearsal day on Saturday March 15th.

Full details and an application form can be downloaded from our website www.fun.to/bfmt

Bollington Festival Choir
Musical Director, Donald Judge

Founded by Dr John Coope MBE in 1964, Bollington Festival Choir is a friendly group which retains its village roots while welcoming singers from a wide area. Our imaginative and varied programmes often include pieces chosen by members in a regular poll.

**Bollington Festival
Choir**

2013 - 2014

***"...happy, confident singers,
alert to the music..."***



***Programme
of
Concerts
and
Events***

www.fun.to/bfmt
Registered Charity no: 513224

¡Ay Andar!

**Sunday
8 December 2013
7.30 pm**



Quecha Peruvian Indian soapstone carving

¡Ay Andar!, the exuberant piece that opens our Christmas concert, exhorts us to travel to Bethlehem to see the Christ Child. It's by Juan de Araujo, a Spanish baroque composer who travelled to South America and absorbed the influences of native music. Motets, carols and instrumental music from the UK, Iberia, N and S America are sure to delight.

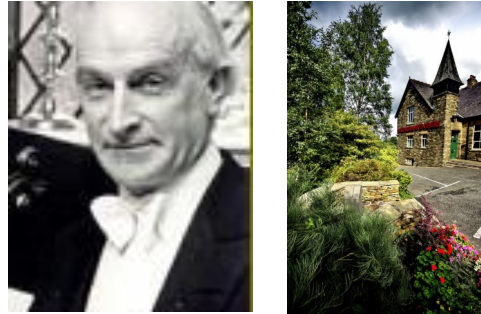
Bollington Methodist Church
Wellington Road SK10 5JR

**Tickets £10
£3 18 and under**

01625 575554

At Home

**Sunday
2 March 2014
7.30 pm**



Dr John Coope MBE / Bollington Arts Centre

To celebrate the Choir's 50th birthday we present a programme of choral pieces which were favourites of 'Dr John', our founder and conductor for 37 years - music from the 16th to the 20th century.

Choir members will perform solo songs and instrumental music, 'at home' in the friendly atmosphere of Bollington Arts Centre.

Bollington Arts Centre
Wellington Road SK10 5JR

**Tickets £10
£3 18 and under**

01625 575554

Carmina Burana

**Saturday
17 May 2014
7.30 pm**



Carl Orff (1895-1982) / Bollington Festival 2014

With soloists, pianists and percussionists from the Royal Northern College of Music, Orff's unique piece captures brilliantly all the energy, beauty and often bawdy humour of the medieval lyrics.

The concert also features solo spots from our instrumentalists and a brand new piece celebrating Bollington by the Choir's conductor Donald Judge.

Festival Marquee

**Tickets from
www.bollingtonfestival.org.uk
and the Festival Box Office**